

CORELOGIC
TECHNOLOGIES

The Game-Changing Benefits of CoreLogic Technologies' Managed IT Services

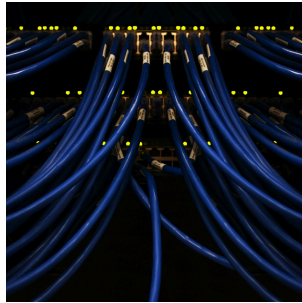
Explore the transformative impact of CoreLogic Technologies' Managed IT Services on businesses, highlighting how our innovative solutions can revolutionize your organization's technology landscape.



Technology Solutions Provider

A leading provider of cutting-edge solutions that empower businesses to achieve their goals

Why Choose CoreLogic Technologies?



Minimize Downtime

Our proactive monitoring and rapid response ensure your systems stay up and running, minimizing disruptions to your business.



Enhanced Cybersecurity

Robust security measures and 24/7 threat monitoring protect your data and systems from cyber threats, giving you peace of mind.



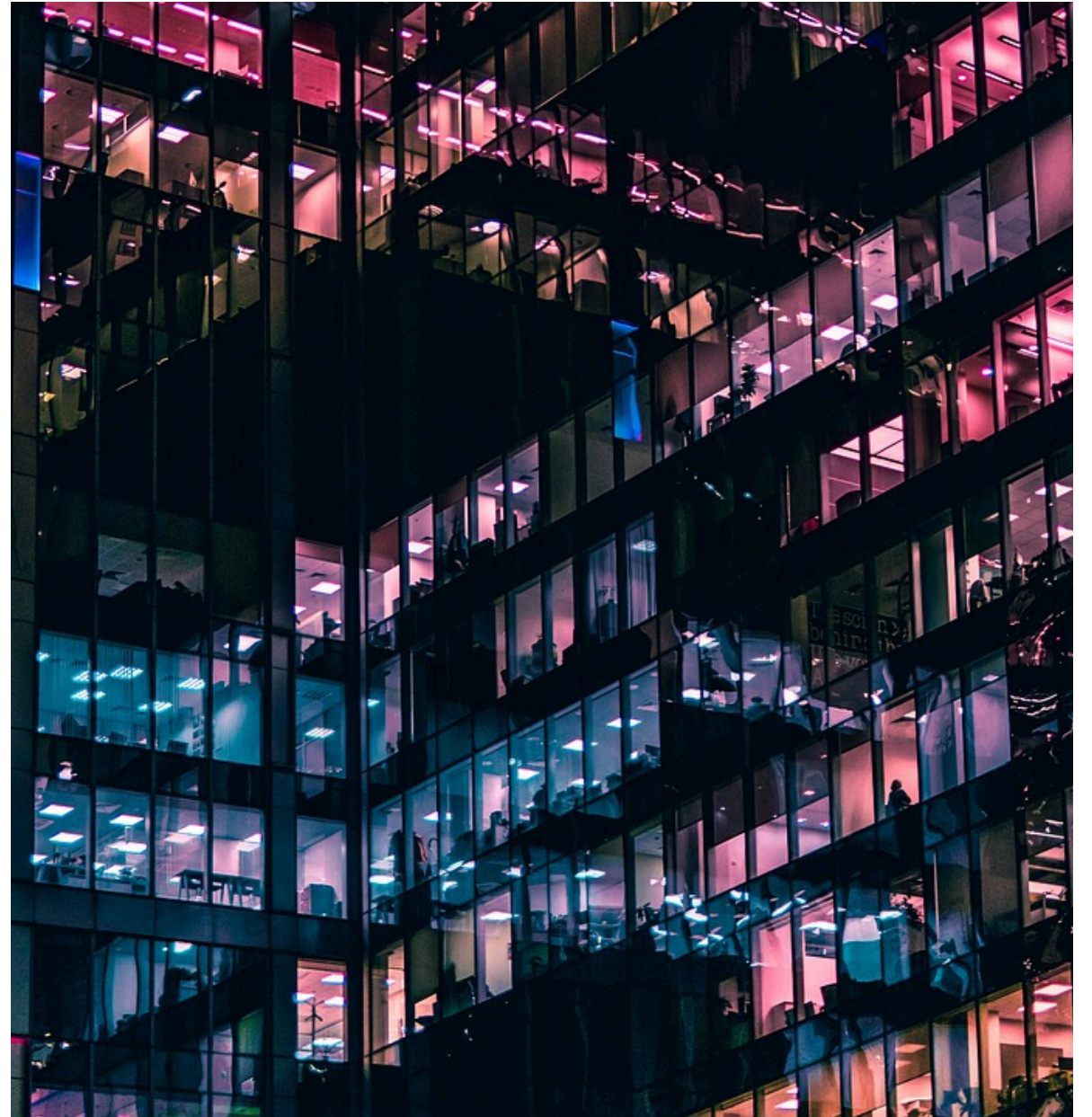
Improved Efficiency

Our cutting-edge IT solutions streamline your operations, automate repetitive tasks, and empower your team to focus on core business activities.

With CoreLogic Technologies, you can trust that your IT infrastructure will support your business growth and success in today's fast-paced, competitive environment.

Eliminate Downtime

Proactive monitoring empowers organizations to identify and address potential issues before they escalate into disruptive events. By continuously monitoring system performance, infrastructure health, and user activity, businesses can quickly detect anomalies and take corrective action, ensuring maximum productivity with minimal interruptions to daily operations.



Focus on Your Business, Not Technology

Managed IT Services

Outsource your IT management and support to our team of experts, allowing you to focus on your core business activities.

Cloud Migration

Seamlessly transition your infrastructure to the cloud, reducing the need for on-premise hardware and maintenance.

Cybersecurity Solutions

Protect your business from cyber threats with our comprehensive security services, including network monitoring and incident response.

IT Strategy and Consulting

Leverage our expertise to develop a strategic technology roadmap that aligns with your business goals and objectives.

24/7 IT Support

Receive prompt and reliable support from our dedicated team, ensuring your technology infrastructure is always running smoothly.

Cost
Predictability
with Flat-
Rate Services



Eliminate Surprise Invoices



Streamline Budgeting



Comprehensive IT Support



Cost
Transparency

Advanced Cybersecurity Protection

- **Network Firewall**

Robust firewall to monitor and filter incoming and outgoing network traffic, block unauthorized access, and prevent malicious attacks.

- **Anti-Virus and Anti-Malware**

Comprehensive protection against viruses, Trojans, worms, and other malicious software, with real-time scanning and automatic updates.

- **Encryption and Data Backup**

Strong data encryption to safeguard sensitive information, coupled with regular, secure data backups to ensure the integrity and recoverability of critical data.

- **Multi-Factor Authentication**

An additional layer of security that requires users to provide multiple forms of identification, such as a password and a one-time code, before accessing sensitive systems or data.

- **Intrusion Detection and Prevention**

Advanced monitoring and analysis of network activity to quickly detect and automatically respond to suspicious or malicious behavior, preventing potential security breaches.

Boost Employee Efficiency

Seamless IT Infrastructure

Ensure your team has access to reliable and efficient IT systems that enable them to work productively, regardless of location.

Remote Support

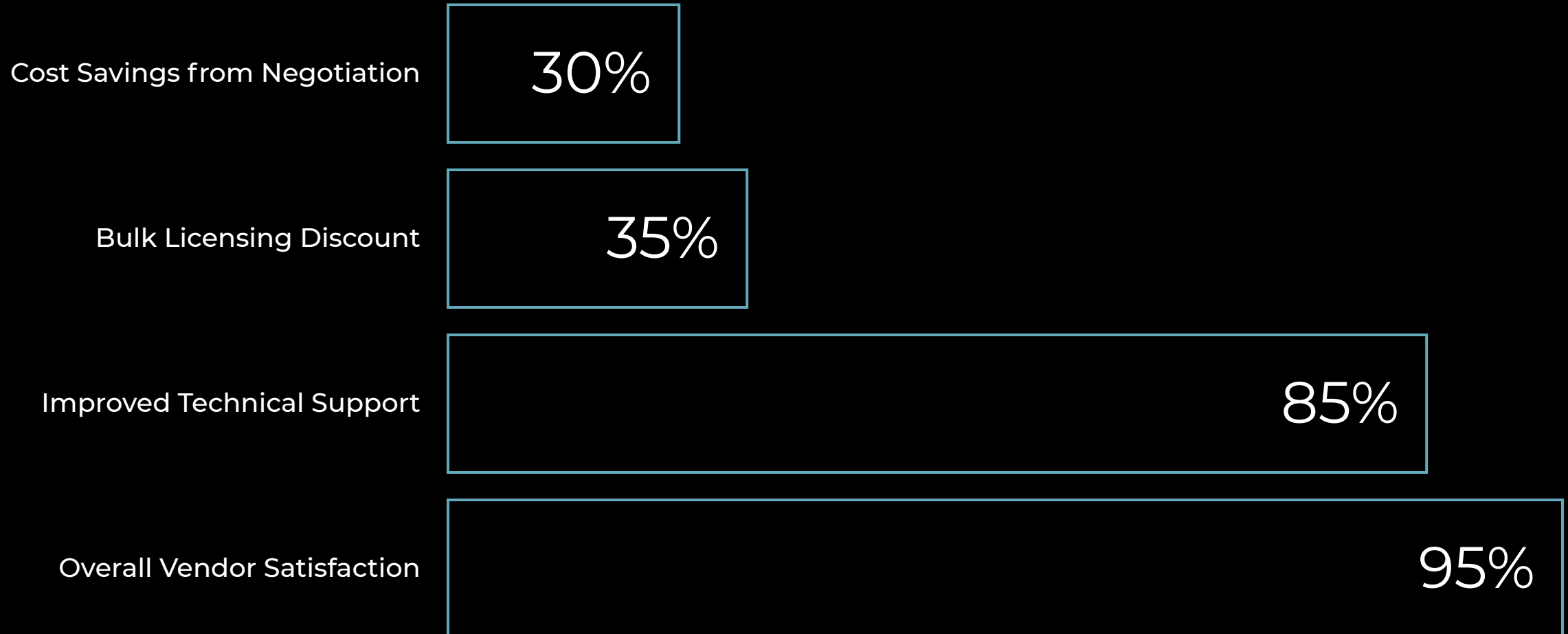
Provide your team with remote IT support to quickly address and resolve any technical issues they face, minimizing downtime and disruptions.

On-site Visits

Offer on-site IT support services to quickly diagnose and fix complex problems, ensuring your team can get back to work without delay.

Simplified Vendor Management

Comparison of vendor benefits, including negotiation, bulk licensing, and support



Scalable IT Solutions for Growth

Cloud-based infrastructure

Scalable and adaptable cloud solutions to meet evolving business needs.

Automated IT processes

Streamlined operations and reduced manual intervention for higher efficiency.

Agile project management

Iterative development and continuous improvement to adapt to changing demands.

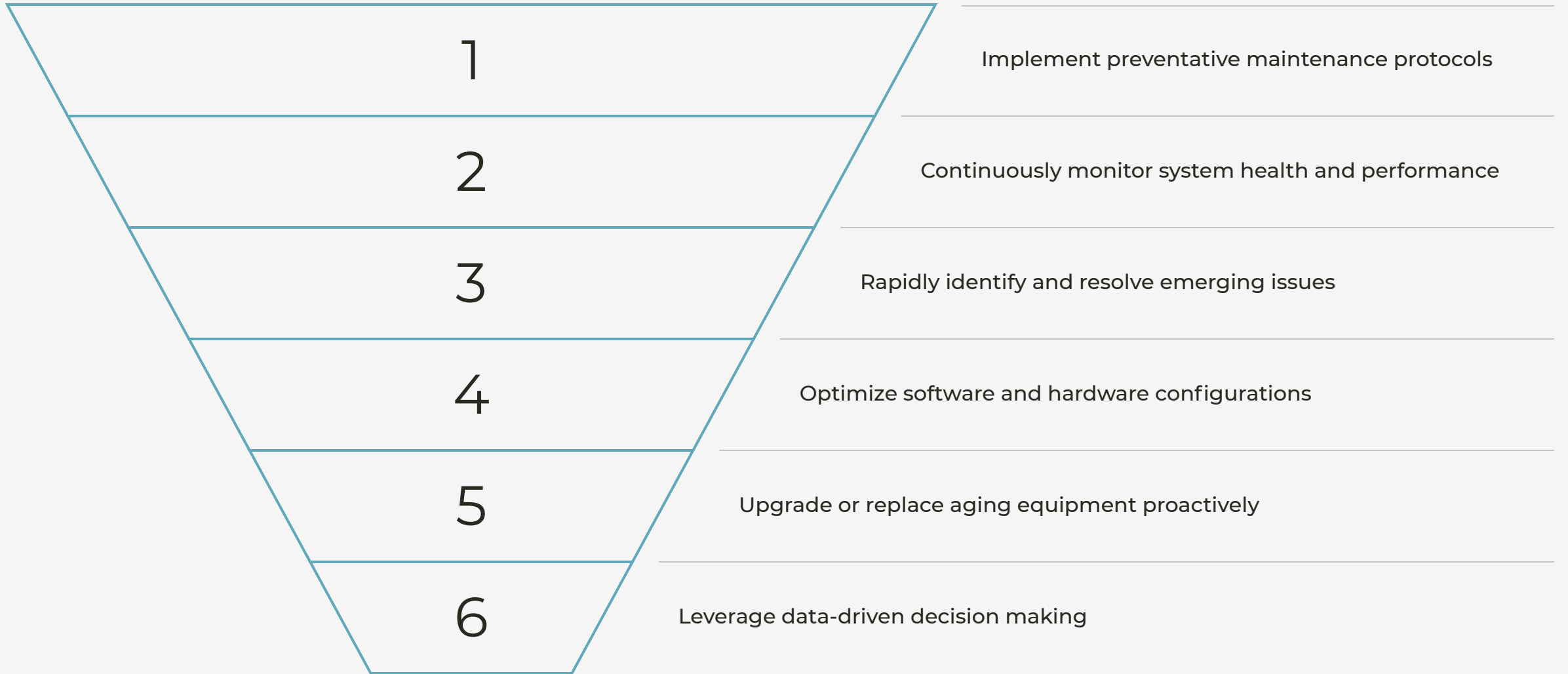
Modular software architecture

Flexible and customizable software components for seamless integration.

Predictive analytics

Proactive insights to anticipate and address future technology requirements.

Maximize Your ROI



24/7 Support and Peace of Mind



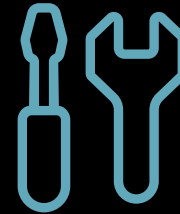
Round-the-clock Monitoring

Our team of IT experts monitors your systems 24 hours a day, 7 days a week, ensuring that any issues are detected and addressed immediately.



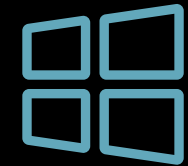
Rapid Response

When a problem arises, our support team is ready to spring into action, providing fast and effective solutions to minimize downtime and disruption.



Proactive Maintenance

We regularly perform system updates, software patches, and preventative maintenance to keep your IT infrastructure running smoothly and securely.



Dedicated Expertise

Your IT systems are in the hands of our experienced professionals, who have the knowledge and skills to expertly manage your technology needs.

With our 24/7 support and proactive approach, you can have peace of mind knowing that your IT systems are in good hands and always available to keep your business running efficiently.