



# CoreLogic Technologies: Your Ultimate Low-Voltage Partner

Your ultimate low-voltage partner for all your electrical and security needs

# Expertise in Low-Voltage Solutions

**2009**

Founding of CoreLogic Technologies, pioneering solutions in low-voltage electrical systems

**2011**

Designed and installed first-of-its-kind integrated low-voltage control system for a major hospital complex

**2014**

Developed innovative low-voltage security and access control solutions for high-profile commercial buildings

**2017**

Expanded low-voltage expertise to include smart building automation and energy management technologies

**2021**

Deployed advanced low-voltage systems for mission-critical infrastructure, ensuring reliability and efficiency

# More Than a Supplier – We're Your Strategic Partner

## TAILORED SOLUTIONS

CoreLogic Technologies works closely with clients to understand their unique needs and develop customized solutions that address their specific challenges.

## PROJECT LIFECYCLE SUPPORT

We support our clients throughout the entire project lifecycle, from initial planning and implementation to ongoing maintenance and optimization.

## STRATEGIC PARTNERSHIP

By acting as a strategic partner, we go beyond simply providing products or services – we collaborate with clients to achieve their long-term business goals.

# Industry-Leading Cable Selection to Support Any Project

## **EXTENSIVE CABLE OFFERINGS**

Showcases a wide range of low-voltage cables, including Ethernet, HDMI, USB, and more, catering to diverse project requirements.

## **INDUSTRY-SPECIFIC APPLICATIONS**

Cables designed for use in various industries, such as commercial, residential, and industrial, ensuring compatibility and reliability.

## **DURABLE CONSTRUCTION**

Cables built with high-quality materials and robust construction to withstand demanding environments and provide long-lasting performance.

## **CUSTOM CONFIGURATIONS**

Ability to accommodate custom cable lengths, connectors, and other specifications to meet unique project needs.

## **COMPREHENSIVE SUPPORT**

Dedicated team of experts available to assist with product selection, installation guidance, and ongoing technical support.

# Network Cabling Solutions for the Digital Age

CoreLogic Technologies offers a suite of network cabling solutions designed to power high-speed data and communication networks. With a focus on performance and reliability, these solutions leverage cutting-edge technologies to deliver seamless connectivity for businesses in the digital age.



# Advanced Security Solutions for Comprehensive Protection

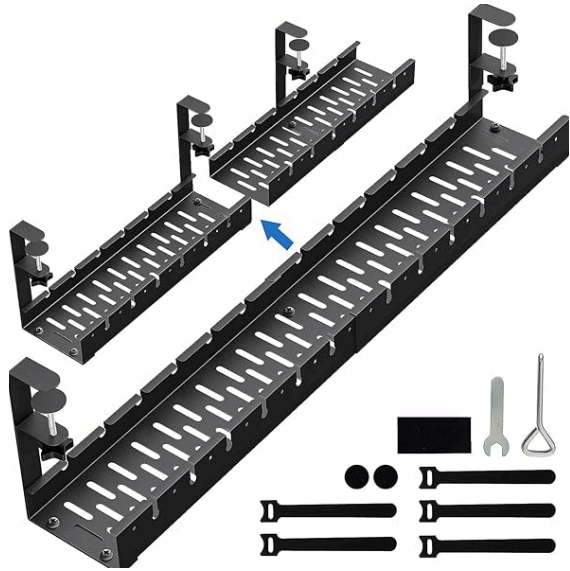
**VIDEO SURVEILLANCE COVERAGE**

**ACCESS CONTROL RELIABILITY**

**INTRUSION DETECTION ACCURACY**

**PERIMETER SECURITY EFFECTIVENESS**

# Smart Cable Management for Faster Installations and Organized Infrastructure



## MODULAR CABLE TRAYS

Versatile and scalable cable tray system that allows for easy customization and expansion of cable routing infrastructure.



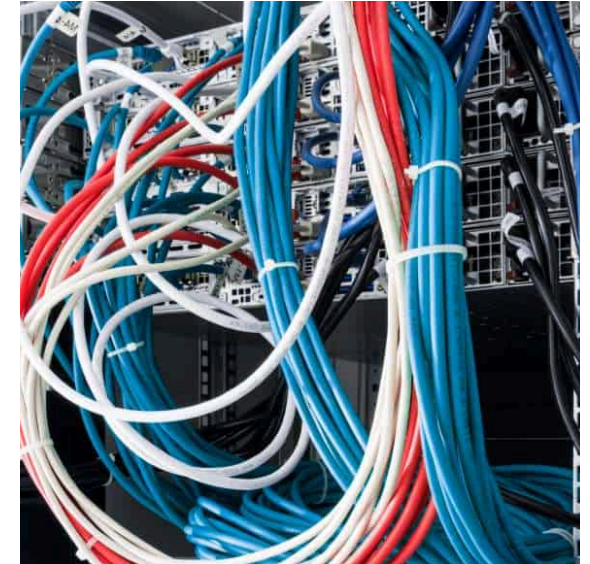
## CABLE MANAGEMENT ACCESSORIES

Wide range of cable management accessories like cable guides, anchors, and organizers for a clean and organized cable layout.



## CABLE LADDER RACKS

Robust and adjustable cable ladder racks that provide secure and organized routing of cables across long distances.



## OVERHEAD CABLE ROUTING

Overhead cable routing solutions that maximize floor space and keep cables neatly organized above the work area.

# Fiber Optic Solutions for High-Speed Connectivity

- **FIBER OPTIC CABLE INFRASTRUCTURE**

Leverage CoreLogic's extensive experience in designing and deploying fiber optic cable networks to enable high-speed, reliable connectivity for your business.

- **FIBER-TO-THE-PREMISE (FTTP) SOLUTIONS**

Deliver lightning-fast internet speeds and futureproof connectivity with CoreLogic's FTTP solutions, tailored to meet the unique needs of your organization.

- **FIBER OPTIC NETWORK INTEGRATION**

Seamlessly integrate fiber optic technologies into your existing infrastructure, ensuring a smooth transition to high-performance connectivity.

- **FIBER OPTIC NETWORK MAINTENANCE**

Rely on CoreLogic's expert technicians to proactively maintain and service your fiber optic network, minimizing downtime and maximizing uptime.

- **FIBER OPTIC CONSULTING AND SUPPORT**

Benefit from CoreLogic's comprehensive advisory services, including network design, installation, and ongoing technical support to optimize your fiber optic connectivity.



# Streamline Your Projects with Supply Chain Solutions

1

IDENTIFY BOTTLENECKS AND INEFFICIENCIES

2

LEVERAGE REAL-TIME DATA ANALYTICS

3

AUTOMATE PROCUREMENT AND LOGISTICS PROCESSES

4

ENHANCE SUPPLIER COLLABORATION AND COMMUNICATION

5

OPTIMIZE INVENTORY MANAGEMENT AND DISTRIBUTION

6

ENSURE ON-TIME DELIVERY AND PROJECT SUCCESS

# The CoreLogic Technologies Advantage

Percentage of customers reporting high satisfaction with key capabilities



92%

A circular gauge chart with a blue outline and a small segment filled with a darker blue, representing 92%.

GLOBAL REACH



94%

A circular gauge chart with a blue outline and a small segment filled with a darker blue, representing 94%.

EXPERT SUPPORT



93%

A circular gauge chart with a blue outline and a small segment filled with a darker blue, representing 93%.

INNOVATIVE SOLUTIONS